

# LIVING DUNES

A GRANDE DUNES COMMUNITY

THE  
**SOUTHPORT**  
PALMETTO COLLECTION

1,924 SQFT // 3 BEDROOMS // 2 BATHROOMS // ATTACHED REAR LOAD GARAGE



**CRG COMPANIES, INC**

INFO@CRGHOMES.COM // 843.651.8460

LIVINGDUNES.NET

**LIVE LOCAL, LIVE SMART, LIVING DUNES**



**FOR SALES INFORMATION CONTACT CRG COMPANIES: 843-651-8460 | INFO@CRGHOMES.COM**



Floor plans and elevations are artist's renderings and may contain options which are not standard on all models. Living Dunes reserves the right to make changes to these floor plans, specifications, dimensions, and elevations without prior notice. Stated dimensions and square footage are approximate and should not be used as representation of the home's precise or actual size. [PLN4.0:V6]

# LIVING DUNES

A GRANDE DUNES COMMUNITY

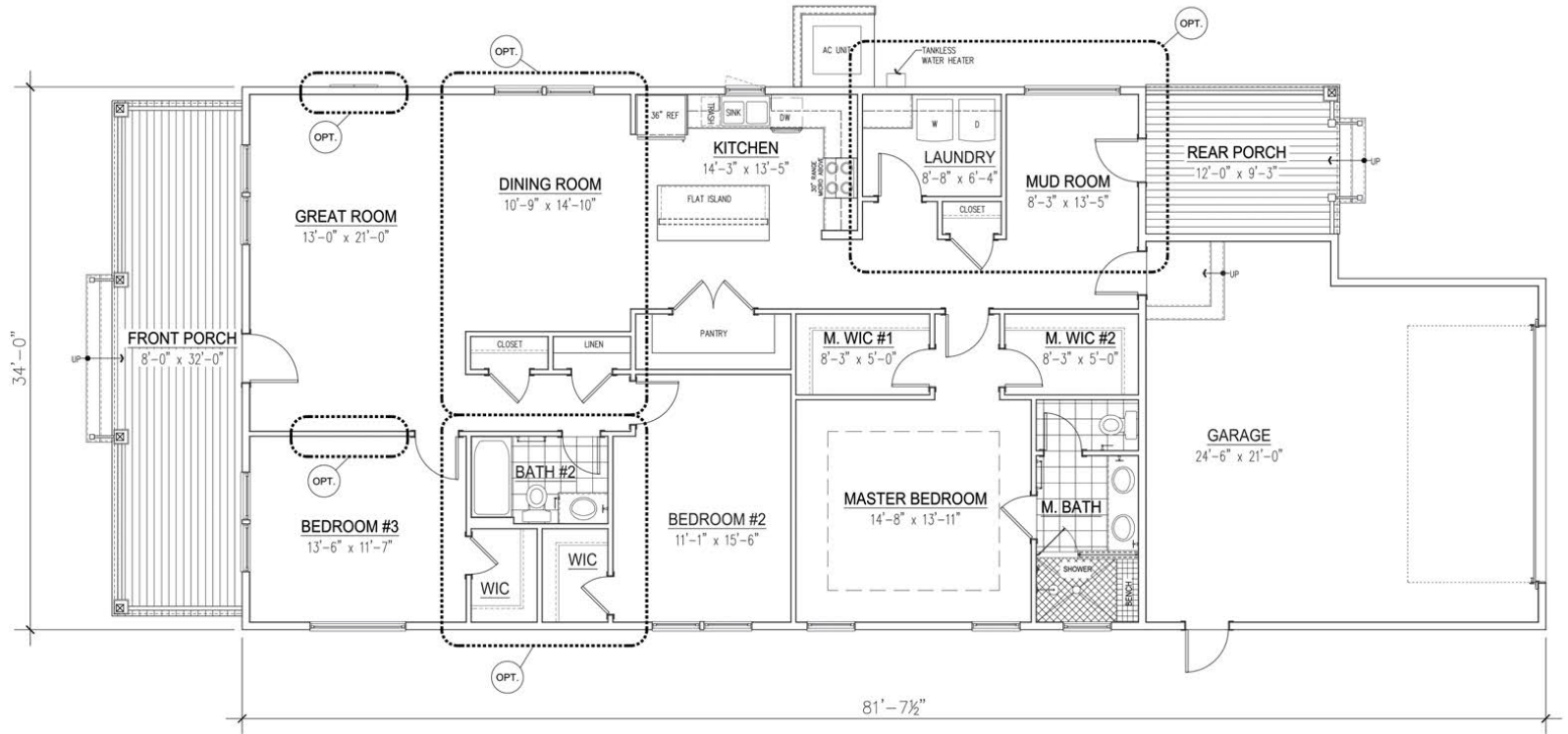
## THE SOUTHPORT PALMETTO COLLECTION

TOTAL HEATED SQFT: 1,924

- 1ST FLOOR: 1,924

TOTAL UNHEATED SQFT: 961

TOTAL SQFT: 2,885



FIRST FLOOR

FOR SALES INFORMATION CONTACT CRG COMPANIES: 843-651-8460 | INFO@CRGHOMES.COM



Floor plans and elevations are artist's renderings and may contain options which are not standard on all models. Living Dunes reserves the right to make changes to these floor plans, specifications, dimensions, and elevations without prior notice. Stated dimensions and square footage are approximate and should not be used as representation of the home's precise or actual size. [PLN4.0:V6]

# LIVING DUNES

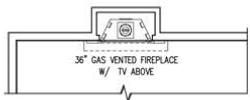
A GRANDE DUNES COMMUNITY

## THE SOUTHPORT PALMETTO COLLECTION

### STRUCTURAL OPTIONS

HEATED AREA SQFT:

- OPTIONAL BATH#2: 50



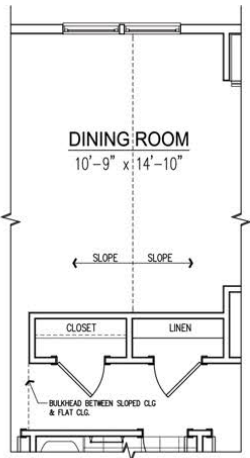
### OPTIONAL FIREPLACE

Add a fireplace to the exterior wall of the great room.



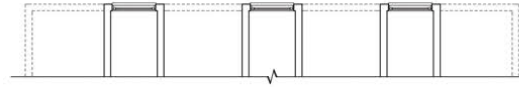
### OPTIONAL FRENCH DOORS TO BEDROOM #3

Upgrade your bedroom #3 to include French doors.



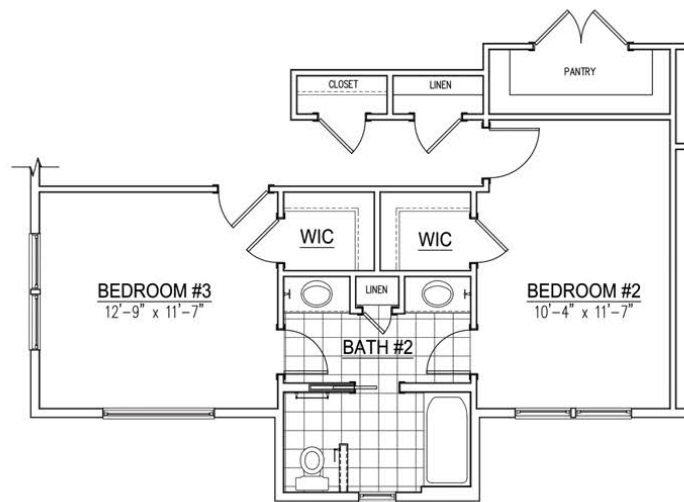
### OPTIONAL VAULTED CEILING

Upgrade your dining room to include vaulted ceilings.



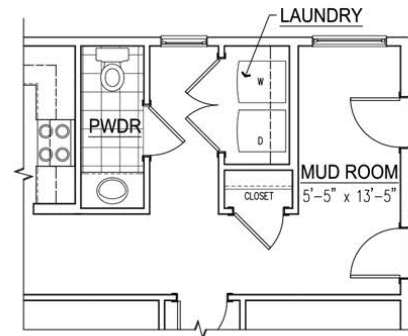
### OPTIONAL SHED DORMER ROOF

Upgrade your front elevation with an optional shed dormer roof.



### OPTIONAL BATH #2

Create a guest suite by converting bath #2 to a jack-and-jill layout, separating tub/toilet room from the vanity area.



### OPTIONAL POWDER & LAUNDRY

Additional options for this layout include adding a 1/2 bath to the laundry area.

FOR SALES INFORMATION CONTACT CRG COMPANIES: 843-651-8460 | INFO@CRGHOMES.COM



Floor plans and elevations are artist's renderings and may contain options which are not standard on all models. Living Dunes reserves the right to make changes to these floor plans, specifications, dimensions, and elevations without prior notice. Stated dimensions and square footage are approximate and should not be used as representation of the home's precise or actual size. [PLN4.0:V6]