

# LIVING DUNES

A GRANDE DUNES COMMUNITY

THE  
**TOWNHOMES**  
THREE STORY - FRONT PORCH

2,378 SQFT // 4 BEDROOMS // 3.5 BATHROOMS // DRIVE UNDER GARAGE



**CRG COMPANIES, INC**

INFO@CRGHOMES.COM // 843.651.8460

LIVINGDUNES.NET

**LIVE LOCAL, LIVE SMART, LIVING DUNES**



Floor plans and elevations are artist's renderings and may contain options which are not standard on all models. Living Dunes reserves the right to make changes to these floor plans, specifications, dimensions, and elevations without prior notice. Stated dimensions and square footage are approximate and should not be used as representation of the home's precise or actual size. [THFP:V6]

# LIVING DUNES

A GRANDE DUNES COMMUNITY

## THE TOWNHOMES THREE STORY - FRONT PORCH

TOTAL HEATED SQFT: 2,378

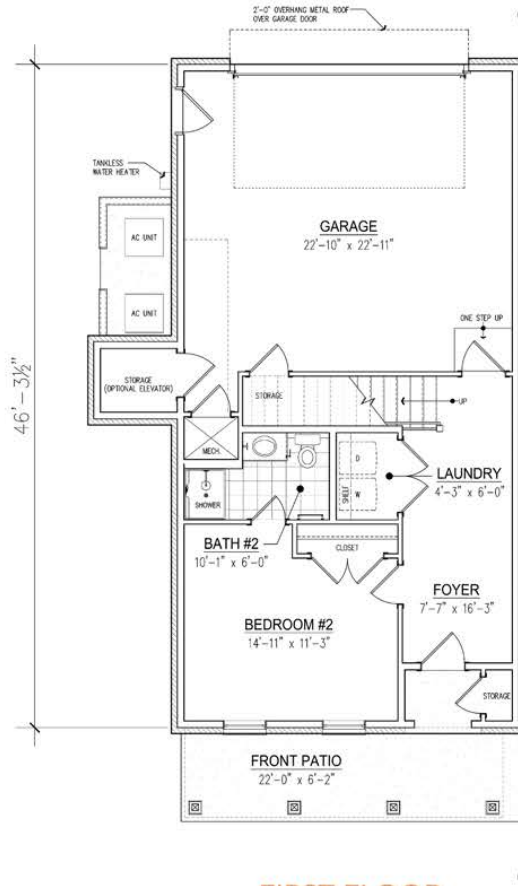
- 1ST FLOOR: 534

- 2ND FLOOR: 1,006

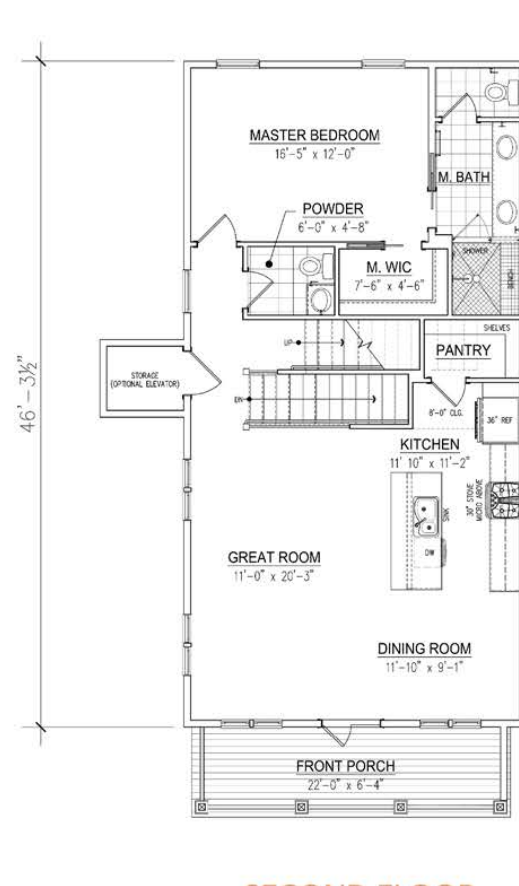
- 3RD FLOOR: 778

TOTAL UNHEATED SQFT: 924

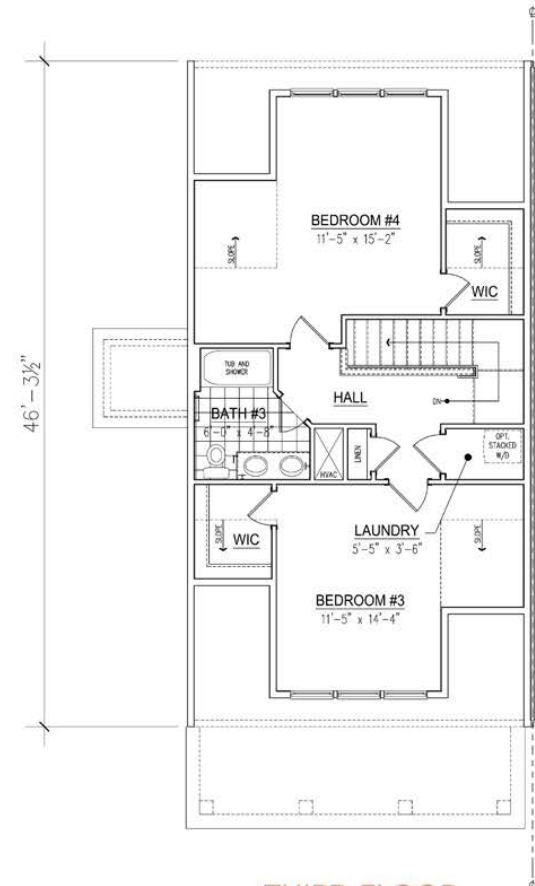
TOTAL SQFT: 3,302



FIRST FLOOR



SECOND FLOOR



THIRD FLOOR

FOR SALES INFORMATION CONTACT CRG COMPANIES: 843-651-8460 | INFO@CRGHOMES.COM



Floor plans and elevations are artist's renderings and may contain options which are not standard on all models. Living Dunes reserves the right to make changes to these floor plans, specifications, dimensions, and elevations without prior notice. Stated dimensions and square footage are approximate and should not be used as representation of the home's precise or actual size. [THFP:V6]