

LIVING DUNES

A GRANDE DUNES COMMUNITY

THE
CHARLESTON
PALMETTO COLLECTION

1,826 SQFT // 3 BEDROOMS // 2.5 BATHROOMS // MASTER DOWNSTAIRS



CRG HOMES

INFO@CRGHOMES.COM // 843.651.8460

LIVINGDUNES.NET

LIVE LOCAL, LIVE SMART, LIVING DUNES



FOR SALES INFORMATION CONTACT CRG HOMES: 843-651-8460 | INFO@CRGHOMES.COM



Floor plans and elevations are artist's renderings and may contain options which are not standard on all models. Living Dunes reserves the right to make changes to these floor plans, specifications, dimensions, and elevations without prior notice. Stated dimensions and square footage are approximate and should not be used as representation of the home's precise or actual size. [PLN2.0:V13]

LIVING DUNES

A GRANDE DUNES COMMUNITY

THE CHARLESTON PALMETTO COLLECTION

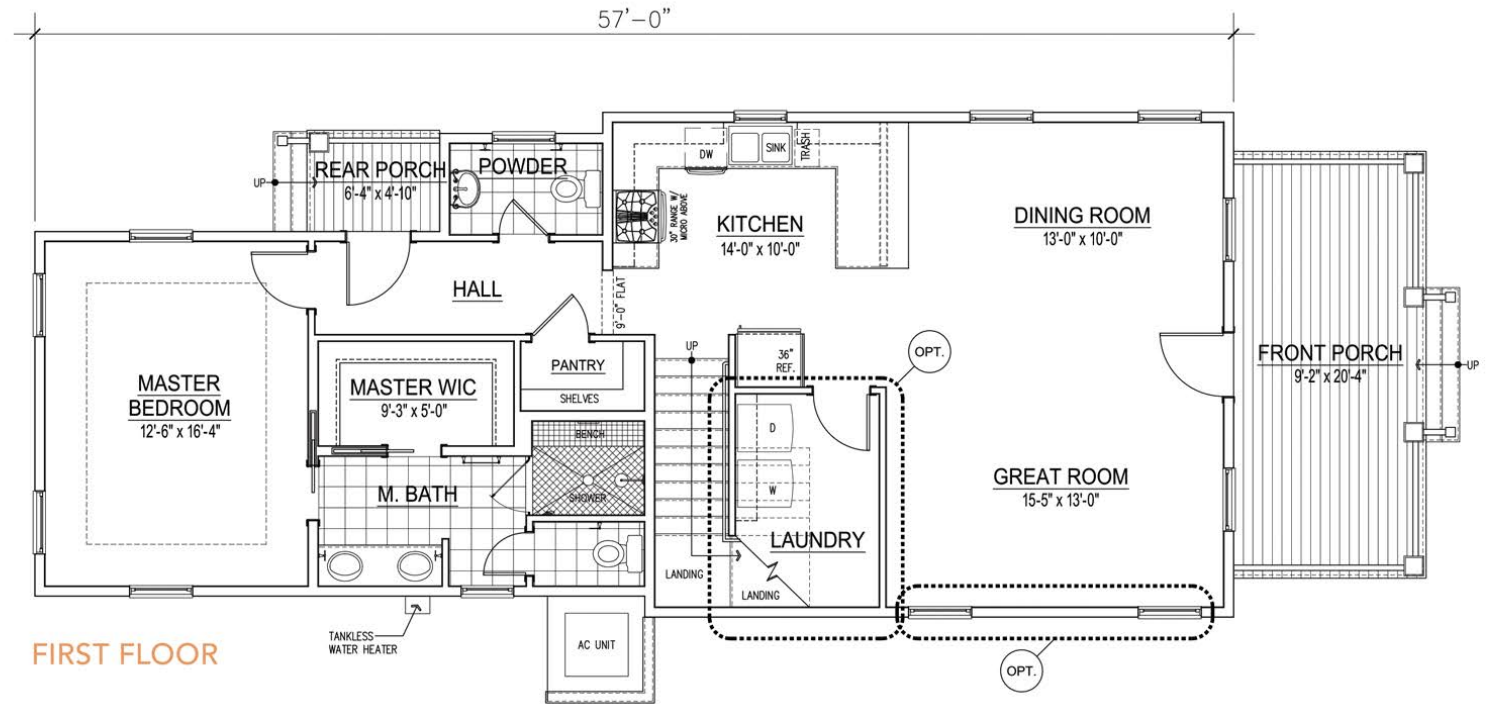
TOTAL HEATED SQFT: 1,826

- 1ST FLOOR: 1,222

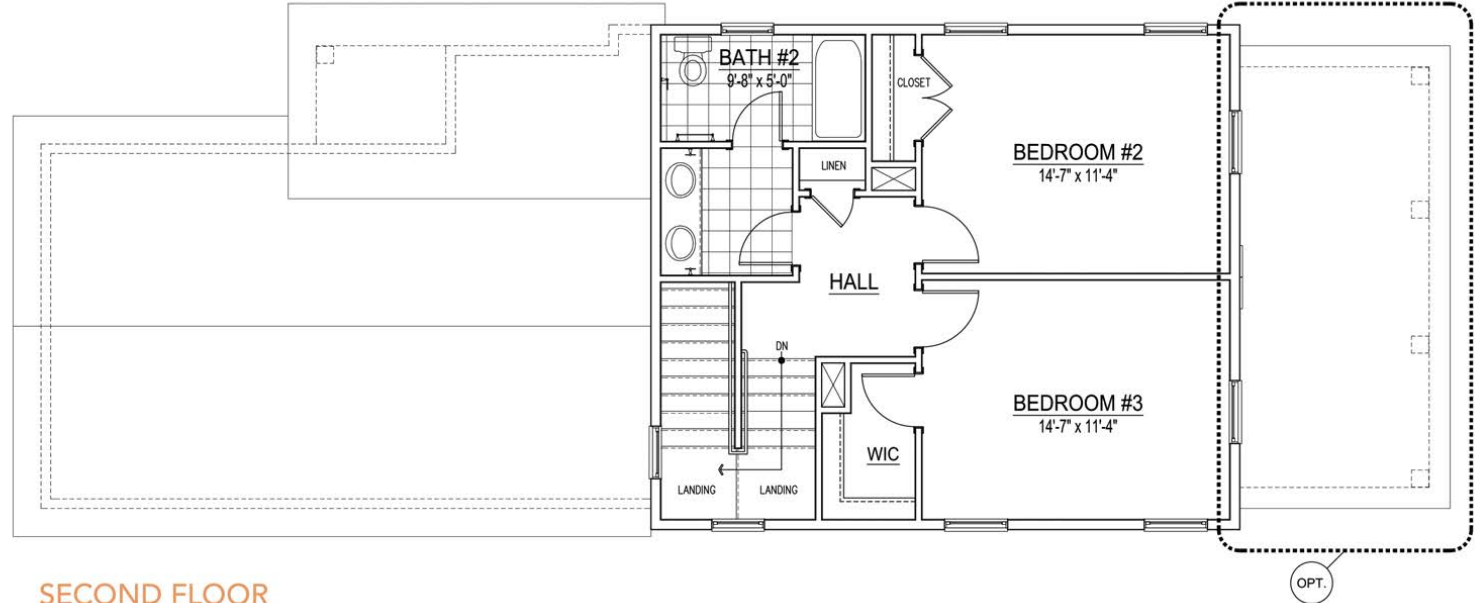
- 2ND FLOOR: 604

TOTAL UNHEATED SQFT: 216

TOTAL SQFT: 2,042



FIRST FLOOR



SECOND FLOOR

FOR SALES INFORMATION CONTACT CRG HOMES: 843-651-8460 | INFO@CRGHOMES.COM



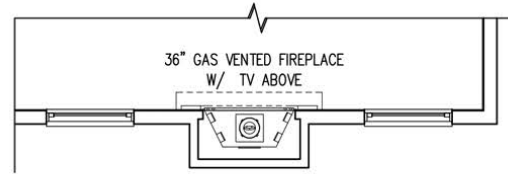
Floor plans and elevations are artist's renderings and may contain options which are not standard on all models. Living Dunes reserves the right to make changes to these floor plans, specifications, dimensions, and elevations without prior notice. Stated dimensions and square footage are approximate and should not be used as representation of the home's precise or actual size. [PLN2.0:V13]

THE CHARLESTON
PALMETTO COLLECTION

STRUCTURAL OPTIONS

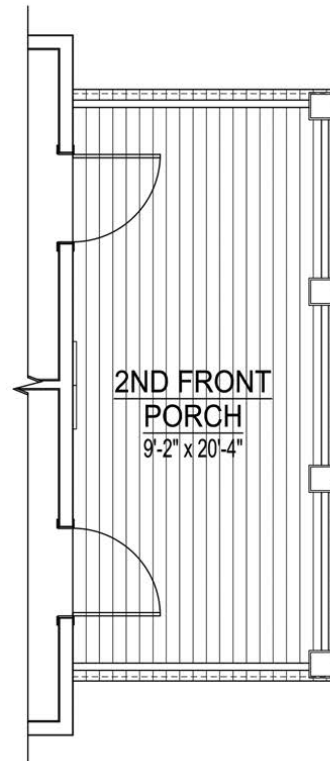
OPTIONAL UNHEATED SQFT:

- 2ND FLOOR FRONT PORCH: 186
- * OPTIONAL PULL DOWN STAIR IN 2ND FLOOR HALL AND GARAGE
- * OPTIONAL POCKET DOOR AT BEDROOM #3 WIC
- * UTILITY SINK POSSIBLE WITH STACKABLE WASHER/DRYER



OPTIONAL FIREPLACE

Add a fireplace to the exterior wall of the great room.



OPTIONAL SECOND FLOOR PORCH

Additional second floor porch accessible from both second floor bedrooms.

FOR SALES INFORMATION CONTACT CRG HOMES: 843-651-8460 | INFO@CRGHOMES.COM

