

LIVING DUNES

A GRANDE DUNES COMMUNITY

THE
4.0 TOWNHOME
THREE STORY - FRONT PORCH

2,280 SQFT // 3 BEDROOMS // 2 FULL / 2 HALF BATHROOMS // 2 CAR GARAGE



CRG HOMES

INFO@CRGHOMES.COM // 843.651.8460

LIVINGDUNES.NET

LIVE LOCAL, LIVE SMART, LIVING DUNES



FOR SALES INFORMATION CONTACT CRG HOMES: 843-651-8460 | INFO@CRGHOMES.COM



Floor plans and elevations are artist's renderings and may contain options which are not standard on all models. Living Dunes reserves the right to make changes to these floor plans, specifications, dimensions, and elevations without prior notice. Stated dimensions and square footage are approximate and should not be used as representation of the home's precise or actual size. [TH4.0:V1]

LIVING DUNES

A GRANDE DUNES COMMUNITY

THE 4.0 TOWNHOME

THREE STORY - FRONT PORCH

TOTAL HEATED SQFT: 2,280

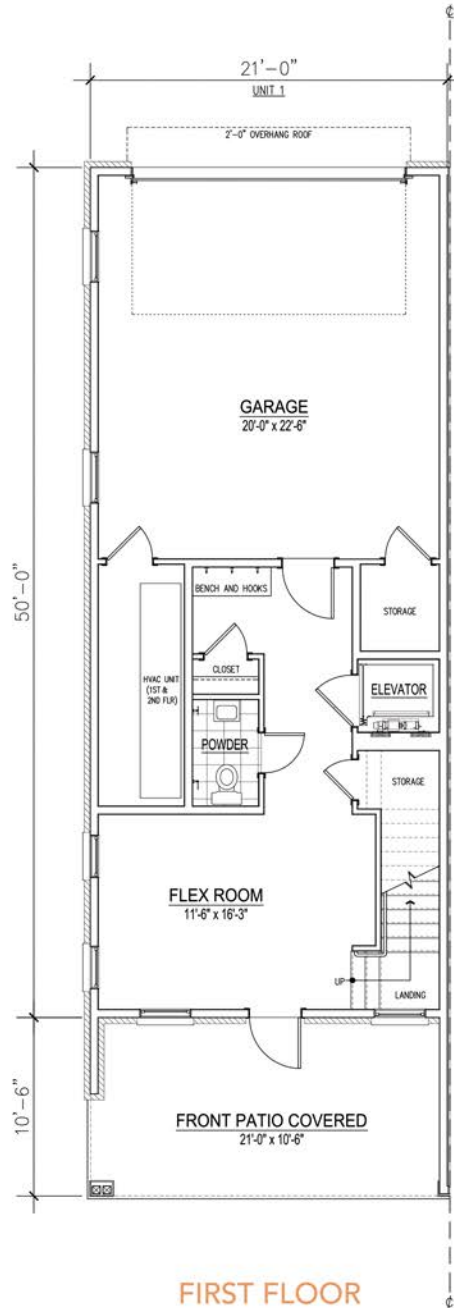
- 1ST FLOOR: 458

- 2ND FLOOR: 1,100

- 3RD FLOOR: 722

TOTAL UNHEATED SQFT: 1,226

TOTAL SQFT: 3,546



FOR SALES INFORMATION CONTACT CRG HOMES: 843-651-8460 | INFO@CRGHOMES.COM



Floor plans and elevations are artist's renderings and may contain options which are not standard on all models. Living Dunes reserves the right to make changes to these floor plans, specifications, dimensions, and elevations without prior notice. Stated dimensions and square footage are approximate and should not be used as representation of the home's precise or actual size. [TH4.0:V1]